



RIABLO

evolve your exercise, measure the movement



RIABLO

Riablo changes the way of doing rehabilitation exercises, measuring the movements, providing motivation to the patient and detailed tools to professionals.

Riablo is a product totally made in Italy designed, developed and industrialised by CoRehab, an Italian company that has been collaborating since 2012 with the most prestigious professionals of physical rehabilitation and sport.

CoRehab is an ISO13485 certified company that designs, manufactures and distributes CE class 1/m certified medical products for physical rehabilitation and injury prevention.

Riablo is marketed all over the world by Euleria srl, an Italian company that manufactures and distributes products and services to help movement professionals to support their patients throughout the recovery process or in supporting a particular period of life.



RIABLO

The innovative and patented Riablo method is used successfully throughout Europe, the United Arab Emirates and Australia with orthopaedic, neurological and sports patients of all ages.

Thanks to validated and extremely accurate wearable inertial sensors, a pressure board and a dedicated software designed according to the most modern user experience techniques, Riablo allows the patient to perform the exercises in a motivated and correct manner, ensuring sensible improvements compared to traditional exercises.

The visual-auditory biofeedback of Riablo is scientifically validated and guides patients in the execution of the exercises, allowing them to self-correct and learn to correctly execute every movement, avoiding compensations.



The exercises can be combined in specific sequences for the clinical indications treated, in order to simplify and speed up the integration of technology into the practice of the center or clinic.

In addition to exercises with biofeedback, Riablo allows to perform R.O.M., functional and balance assessments, providing a simple result of high clinical value.

Riablo is a useful tool for clinical and scientific research, thanks to the simple interoperability of the system and the possibility of having raw or aggregated data available for each exercise and for each patient, collaborating with professionals and technicians of Euleria.

NUMBERS OF RIABLO



20.000+ PATIENTS

15.000+ ASSESSMENTS

200.000+ EXERCISES



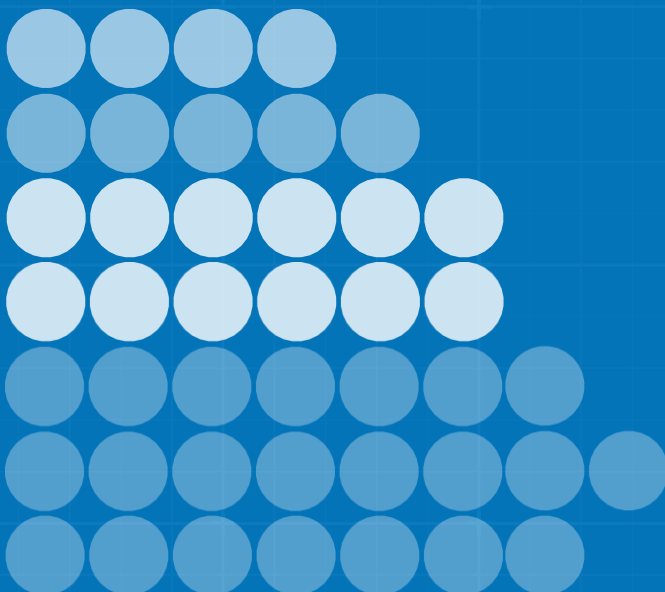
350+ PRODUCTS
INSTALLED



TRANSLATED IN 8
LANGUAGES



PRESENTED IN 12
COUNTRIES

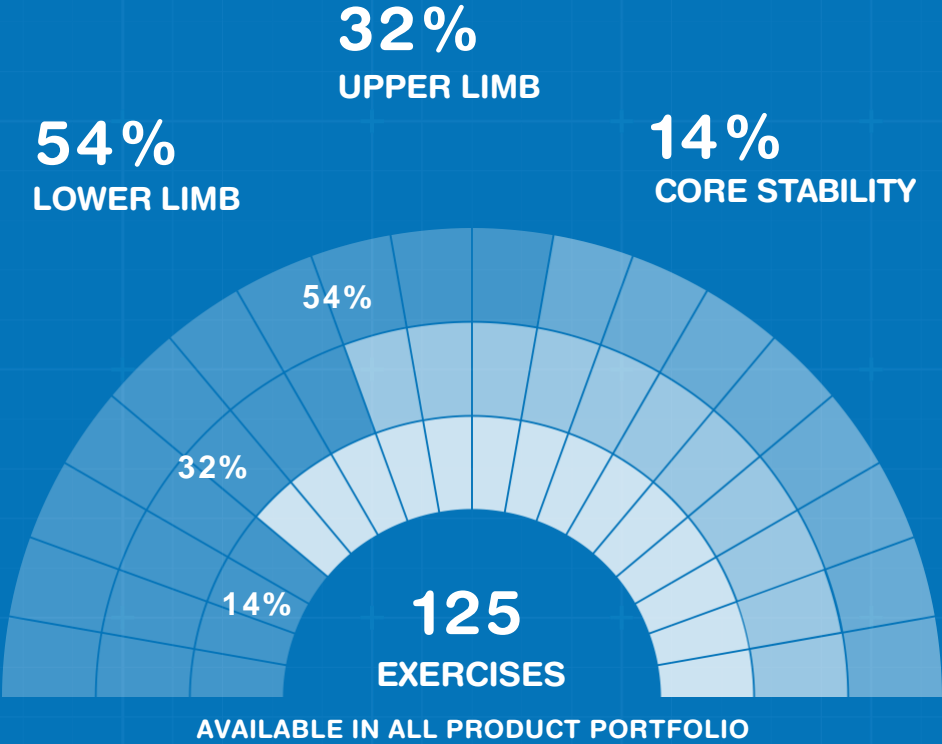


8 RESEARCH PROJECTS

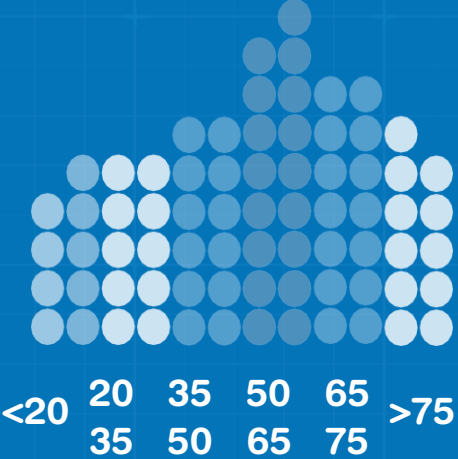
6+ YEARS OF R&D

12 RESEARCH CENTRES
INVOLVED

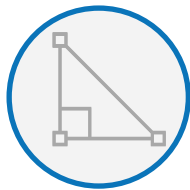
30+ SCIENTIFIC
PUBLICATIONS



**RIABLO'S
PATIENTS AGE**



ASSESSMENTS



R.O.M.



BALANCE



WALK



F.R.P.



PERFORMANCE

**RIABLO
IMPROVES:**

- 1. BALANCE CONTROL
- 2. HANDLING OF
ANGLE MOVEMENTS
- 3. COMPENSATION
LEARNING
- 4. CORRECT MANAGEMENT
OF TIMING

**RIABLO GUARANTEES
INCREASE OF:**



COMPARED TO TRADITIONAL EXERCISE

100%

WORKING CYCLES WITH RIABLO

The work experience with Riablo typically begins with an accurate initial assessment performed with Riablo that allows to objectively measure the patient's status and set the parameters of the rehabilitation process. The path continues with personalized sessions of exercises with biofeedback to then end with a final re-assessment, always performed with Riablo. Following the execution of both assessments and exercise sessions, the results are automatically available in both pdf and editable format and can be printed and/or sent via email.

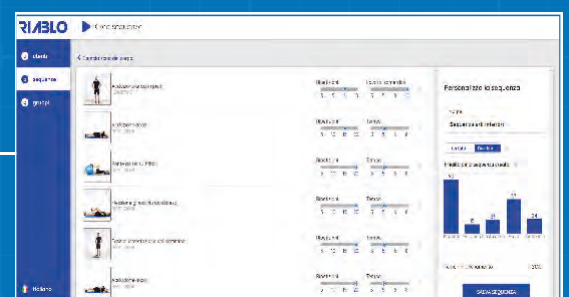
START

INITIAL ASSESSMENT



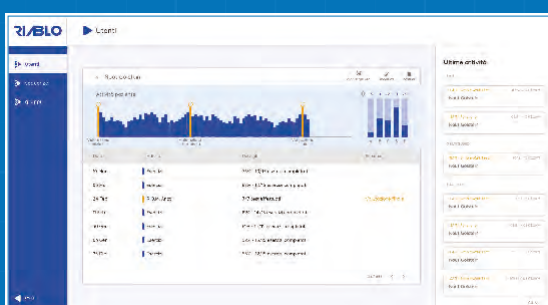
1

REHABILITATION



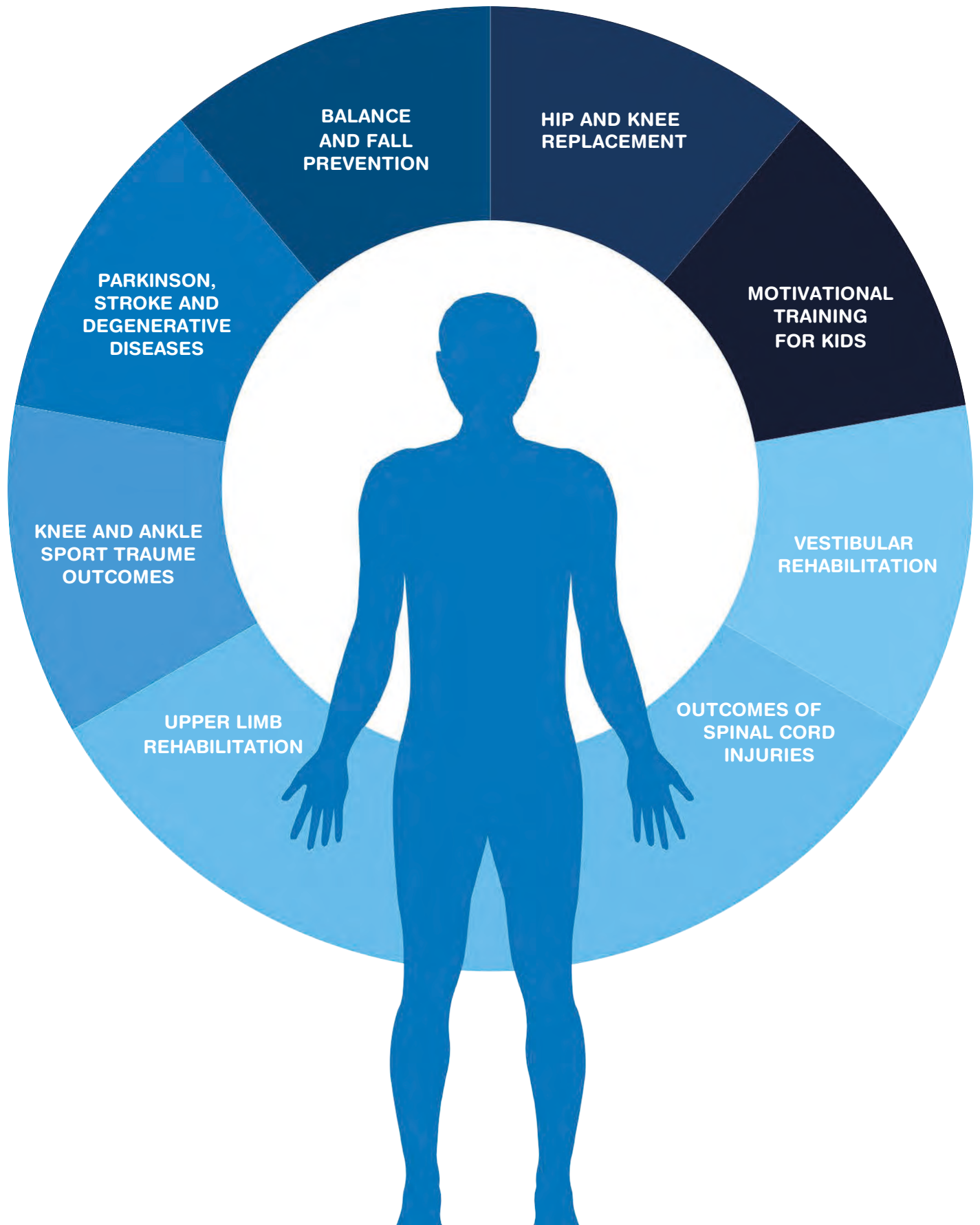
2

FINAL RE-ASSESSMENT



3

MAIN INDICATIONS



VERSIONS OF RIABLO

SILVER

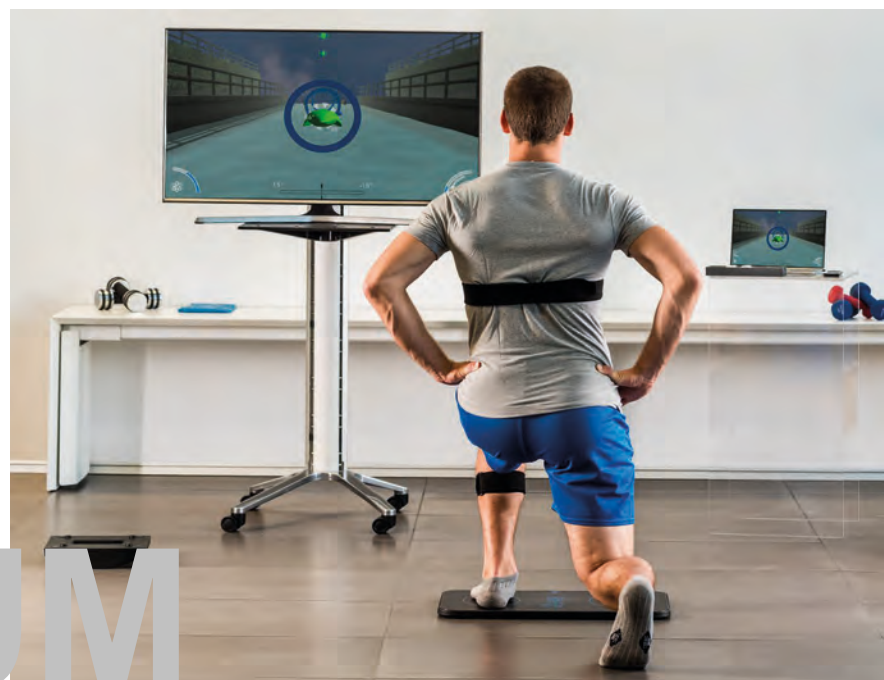
A perfect portable solution with a laptop and 5 inertial sensors to perform both exercises and R.O.M. assessments in total mobility.

SILVER

PREMIUM

The most complete experience of Riablo, to be able to use the database of exercises in its entirety and all the evaluations with 5 sensors and the pressure board.

PREMIUM



VERSIONS OF RIABLO



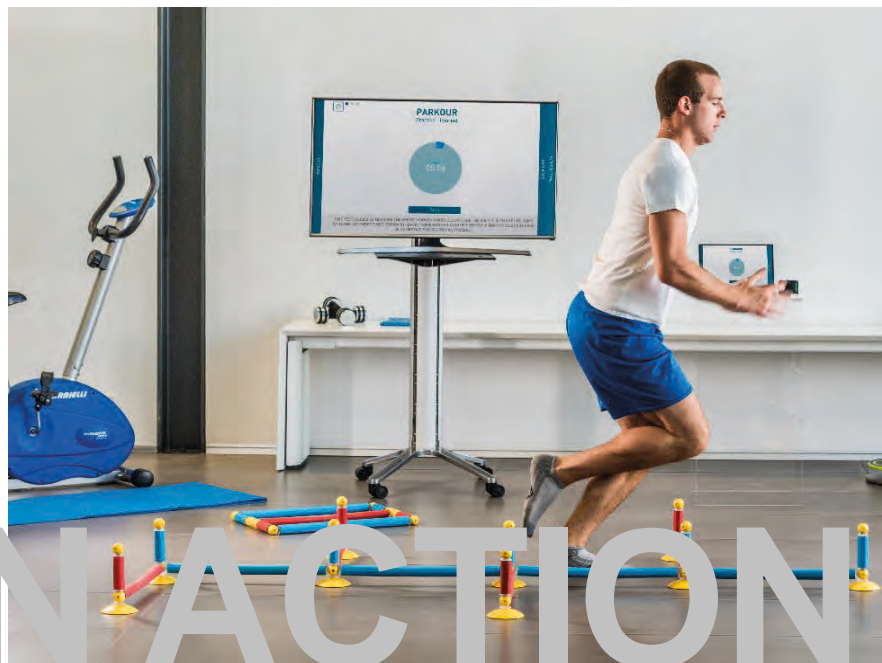
GAIT

Riablo Gait allows to perform an accurate analysis of the space-temporal parameters of gait and a battery of scientifically validated tests to assess the risk of falling in the elderly.

GAIT

BACK IN ACTION (BIA)*

A battery of tests to evaluate balance, agility, strength and speed of lower limbs, with a scientifically validated indicator for return to sport after ACL reconstruction; sections dedicated to proprioceptive, jump and agility trainings.



BACK IN ACTION

*Back In Action is not a certified medical product and currently it is not a version of Riablo. In the course of 2021, Back In Action will become Riablo Performance.

SOLUTIONS FOR EVERY NEED

| | SILVER | PREMIUM | GAIT | BIA* |
|-------------|--|--|-------------------------------|--|
| EXERCISES | Lower Limbs Upper Limbs Back Core | Lower Limbs Upper Limbs Back Core Basic Movements Balance | - | Proprioceptive training Jump training Agility training |
| ASSESSMENTS | R.O.M. | R.O.M. Balance | Gait Fall risk predictor | RTP after ACL Balance Agility Strength Speed |
| REPORT | PDF Exercises PDF Assessments CSV export | PDF Exercises PDF Assessments CSV export | PDF Assessments CSV export | PDF Training PDF Assessments CSV export |

* Back In Action is not a certified medical product and it is not currently a version of Riablo.
In the course of 2021, Back In Action will become Riablo Performance.

HARDWARE COMPONENTS



| | SILVER | PREMIUM | GAIT | BIA |
|----------------------|----------|----------|----------|----------|
| LAPTOP | ✓ | ✓ | ✓ | ✓ |
| SENSORS | 5 | 5 | 2 | 1 |
| PRESSURE BOARD | - | ✓ | - | - |
| PROPRIOCEPTIVE BOARD | - | - | - | ✓ |
| KIT OF STRAPS | ✓ | ✓ | ✓ | ✓ |
| KIT OF CABLES | - | - | - | ✓ |
| BAGS | ✓ | ✓ | ✓ | ✓ |
| TV-STAND | Optional | Optional | Optional | Optional |
| SPACE | Optional | Optional | Optional | Optional |

RIABLO

OPTIONAL SPACE

Euleria has created the SPACE option, a special arrangement of the space purchasable "on top" of Riablo.

SPACE is dedicated to centers wishing to have a space configuration that enhances the product, especially from an aesthetic point of view.

FEATURES

- Dimensions: l.250 x h.215 x d.14 cm
- Support for TV from 50" to 55"
- Sensor housing and station charging
- Laptop shelf
- Three compartments for board, bands, charging cables and other material

REQUIREMENTS

- Adequate space for performing exercises and tests
- A power outlet

RIABLO



JOURNALS AND MAGAZINES

1. Validation of the angular measurements of a new inertial-measurement-unit based rehabilitation system: comparison with state-of-the-art gait. Leardini A, Lullini G, Giannini S, Berti L, Ortolani M, Caravaggi P.J. *Neuroeng Rehabil.* 2014 Sep 11;11:136
2. Functional assessments for decision-making regarding return to sports following ACL reconstruction. Part II: clinical application of a new test battery. Herbst E., Hoser C., Hildebrandt C., Raschner C., Hepperger C., Pointner H., Fink R. *Knee Surg Sports Traumatol Arthrosc.* 2015 May;23(5):1283–91. doi: 10.1007/ s00167-015-3546-3. Epub 2015 Feb 28
3. Functional assessments for decision-making regarding return to sports following ACL reconstruction. Part I: development of a new test battery. Hildebrandt C., Muller L., Zisch B., Huber R., Fink R., Raschner C. *Knee Surg Sports Traumatol Arthrosc.* 2015 May;23(5):1273–81. doi: 10.1007/s00167-015-3529-4. Epub 2015 Feb 15
4. Effects on balance skills and patient compliance of a biofeedback training with inertial motion sensors and virtual reality in subacute stroke: a pilot randomized double-blinded study. Lupo A., Martino Cinnera A., Pucello A., Iosa M., Gimigliano F., Iolascon G., Paolucci S., Morone G. *Functional Neurology*, 2018, pp 131–136, 10.11138/FNeur/2018.33.3.131
5. Wearable Inertial Sensors for Human Movement Analysis. M. Iosa, P. Picerno, S. Paolucci, G. Morone, Expert Rev Med Devices. 2016 Jul;13(7):641–59. doi: 10.1080/17434440.2016.1198694. Epub 2016 Jun 17
6. Isokinetic Extension Strength Is Associated With Single-Leg Vertical Jump Height. Felix Fischer, Cornelia Blank, Tobias Dünwald, Peter Gföller, Elmar Herbst, Christian Hoser, Christian Fink. *Orthop J Sports Med.* 2017 Nov; 5(11): 2325967117736766. Published online 2017 Nov 3. doi: 10.1177/2325967117736766
7. Comparison of the “Back in Action” test battery to standard hop tests and isokinetic knee dynamometry in patients following anterior cruciate ligament reconstruction. Ebert JR, Edwards P, Currie J, Smith A, Joss B, Ackland T, Buelow JU, Hewitt B. *Int J Sports Phys Ther.* 2018 Jun;13(3):389–400.
8. Rehabilitation program based on sensorimotor recovery improves the static and dynamic balance and modifies the basal ganglia neurochemistry: A pilot 1H-MRS study on Parkinson's disease patients. Delli Pizzi S, Bellomo RG, Carmignano SM, Ancona E, Franciotti R, Supplizi M, Barassi G, Onofri M, Bonanni L, Saggini R. *Medicine (Baltimore).* 2017 Dec;96(50):e8732. doi: 10.1097/MD.00000000000008732
9. Total hip replacement: effects of an exergame on the prosecution of the care. Valentina D’Angeli, Matteo Chiodaroli, F Manzoni, Sara Ottobri, Luca Marin. *Il Fisioterapista.* 2018 Luglio–Agosto
10. From videogames to exergaming. David Tacconi, Valentina D’Angeli. *Il Fisioterapista.* 2018 Luglio–Agosto

CONFERENCE PROCEEDINGS

1. Impiego di un sistema innovativo a sensori inerziali e feed-back audio visivi per il monitoraggio a distanza di esercizi riabilitativi L. Berti, G. Lullini, A. Valsecchi, M. Ortolani, P. Caravaggi, A. Leardini, S. Giannini Giornale Ita Med Riabilit 27(2) Ago 2013 (Abstract Book del 41° Congresso Nazionale SIMFER, Roma 13-16 Ottobre 2013)
2. Are modern inertial sensor and bio-feedback based rehabilitation systems reliable enough? A validation study by standard gait analysis. G. Lullini, L. Berti, M. Ortolani, A. Leardini, A. Valsecchi. Gait & Posture 39 (Suppl 1) 2014 (Abstract of the 22th ESMAC Meeting. Glasgow, Scotland, UK. September 2 - 4, 2013)
3. A validation study by standard gait analysis of a new system for rehabilitation of lower limbs based on inertial sensors and feedbacks. L. Berti, G. Lullini, A. Valsecchi, M. Ortolani, P. Caravaggi, A. Leardini Gait & Posture 40 (Suppl 1) 2014 (Abstract of the XIV Congresso della Società Italiana di Analisi del Movimento in Clinica)
4. Muscular activation of lower limbs during rehabilitation with an innovative system based on inertial sensor and biofeedback. Lullini Giada, Berti Lisa, Caravaggi Paolo, Tamarri Silvia, Leardini Alberto. Europ Jou Phy Rehab Med, Vol. 52 N. 2 Suppl. 1. Proceedings of 20th European Congress of Physical and Rehabilitation Medicine
5. Experimental validation of a new system with inertial sensors and feedbacks for the rehabilitation of the lower limbs through the gait analysis. L. Berti, G. Lullini, A. Valsecchi, M. Ortolani, P. Caravaggi, A. Leardini. XIV Congresso della Società Italiana di Analisi del Movimento in Clinica (SIAMOC) 26 - 28 Settembre 2013, Pisa
6. Technological innovation in rehabilitation: usage of biofeedback systems using inertial sensors. G. Lullini, L. Berti, A. Leardini, S. Giannini. Proceedings of the 42° Congresso Nazionale SIMFER, Torino 28 Settembre - 1 Ottobre 2014
7. Does total ankle replacement associated to specific rehabilitation represent a satisfying functional solution for patients affected by rheumatoid arthritis of the ankle joint? G. Lullini, L. Berti, E. Maccagnan, V. Wolensky, A. Leardini, S. Giannini Proceedings of the 41° Congresso Nazionale SIMFER, Roma 13-16 Ottobre 2013
8. Attivazione muscolare durante esercizi riabilitativi per l'arto inferiore tramite un sistema innovativo basato su sensori inerziali e biofeedback. Giada Lullini, Silvia Tamarri, Maurizio Ortolani, Paolo Caravaggi, Alberto Leardini, Lisa Berti. Proceedings of the 43° Congresso Nazionale SIMFER, Ferrara 4-7 Ottobre 2015
9. Muscle activation patterns with a new inertial sensor-based system for rehabilitation after orthopedic treatments. Lullini G., Tamarri S., Caravaggi P., Leardini A., Berti L. Orthopaedic Proceedings, vol. 99-B no. SUPP 2 116, Jan 17
10. Wearable Inertial Sensor for Jump Performance Analysis. Milosevic B. and Farella E. Proceedings of the 2015 workshop on Wearable Systems and Applications, pp. 15-20. Florence, Italy — May 18 - 18, 2015.
11. La riabilitazione della malattia di Parkinson: studio pilota sulle correlazioni tra la plasticità cerebrale e il progetto riabilitativo globale sensori-motorio. Rosa Grazia Bellomo, Simona Maria Carmignano, Giovanni Barassi, Marco Supplizi, Tommaso Plaermo, Raoul Saggini 45° Congresso Nazionale SIMFER (Genova, 22-25 ottobre 2017) - Vol. 31 - Suppl 1 al N.3 - Giornale Italiano di Medicina Riabilitativa

REFERENCES

RESEARCH

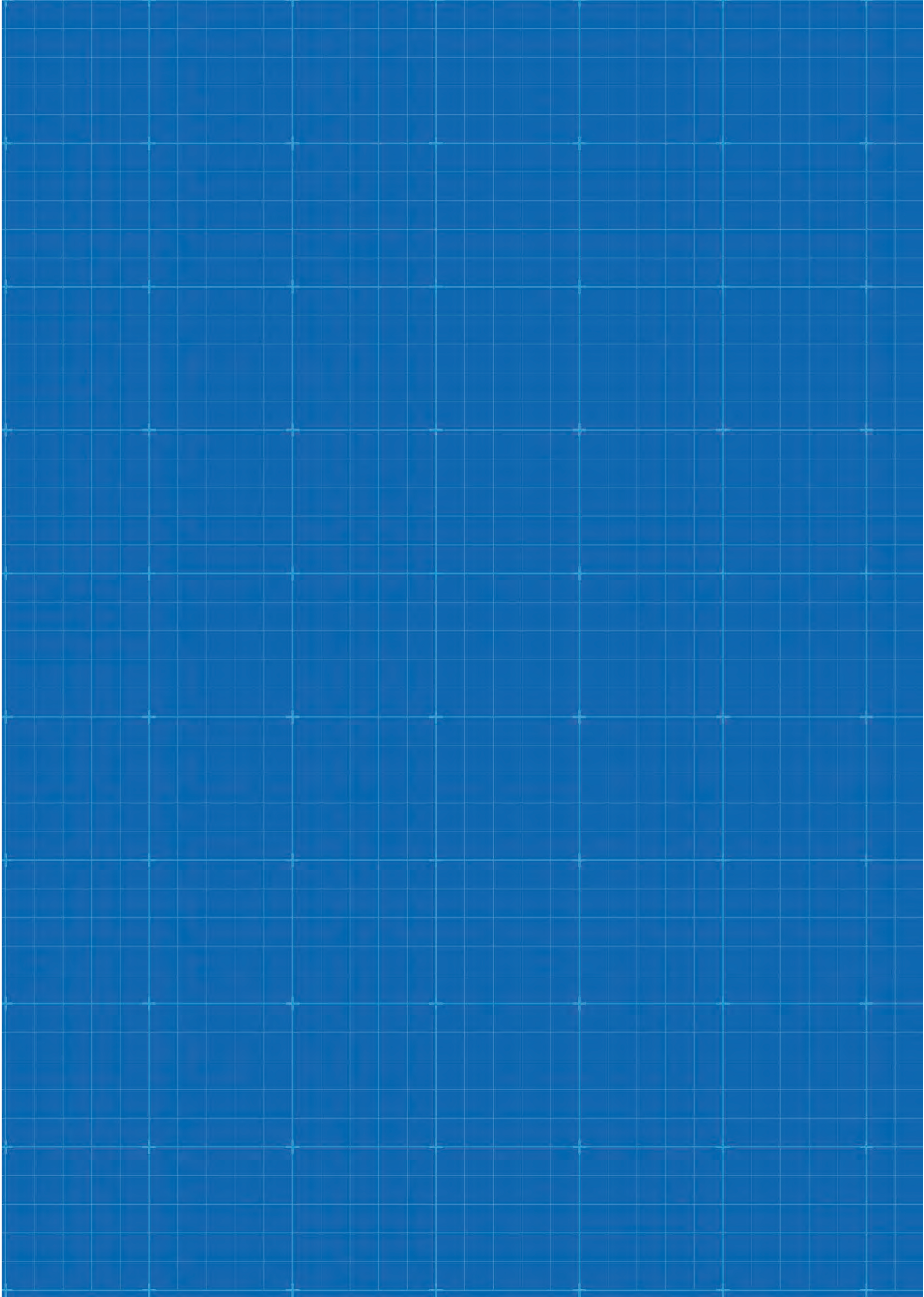


CUSTOMERS



PARTNERS





Euleria srl
Via dei Solteri, 38
38122 Trento TN

