

It's a rare thing to care

Cutting-edge drugs for calcium-related diseases

SCENARIO & PROBLEM

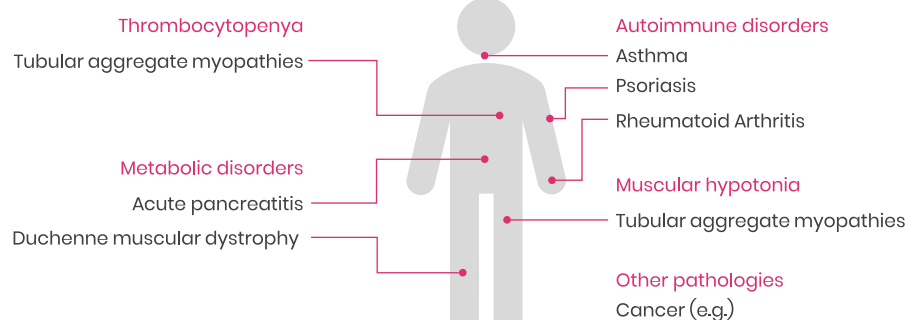
Ca⁺⁺ is a crucial ion

in the regulation of **numerous cellular processes** in the human cells. Its homeostasis is **attentively regulated** by several mechanisms, including the **SOCE**.*

SOCE over-activation

leads to an unusual increase of intracellular Ca⁺⁺ and is related to **many diseases**.

*Store-Operated Calcium Entry



Few **SOCE** modulators are in clinical trials
No **SOCE** modulators has reached regulatory approval

TARGET PATHOLOGIES



Tubular Aggregate Myopathies

1 : 100,000
global prevalence



Duchenne Muscular Dystrophy

1 : 3,300
male global incidence



Acute Pancreatitis

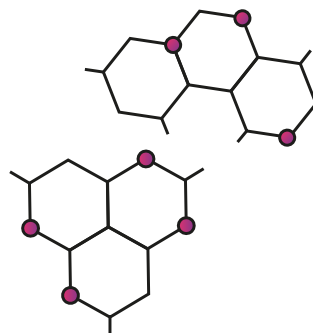
1 : 2,000
global incidence

THERAPEUTIC SOLUTION

Our cutting-edge molecules

are innovative and **highly selective chemical inhibitors of SOCE**.

They **reduce SOCE activity** in a nanomolar range and therefore can be safely used as a **treatment for related pathologies**.



Good safety
& PK profile



High
selectivity



High potency
range (nM)

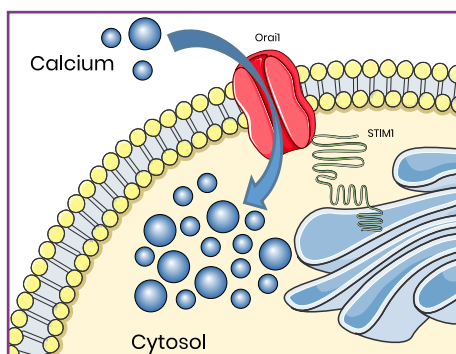


Easy
manufacturing

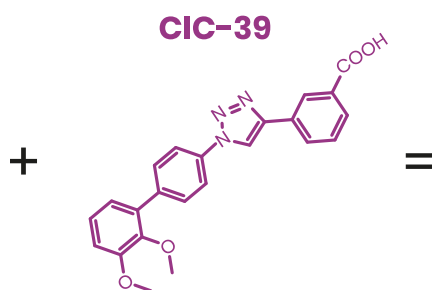


IP
protection

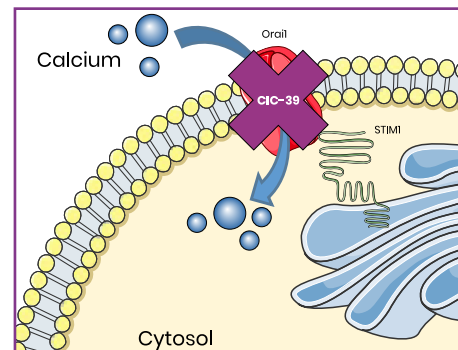
MECHANISM OF ACTION



SOCE over-activation

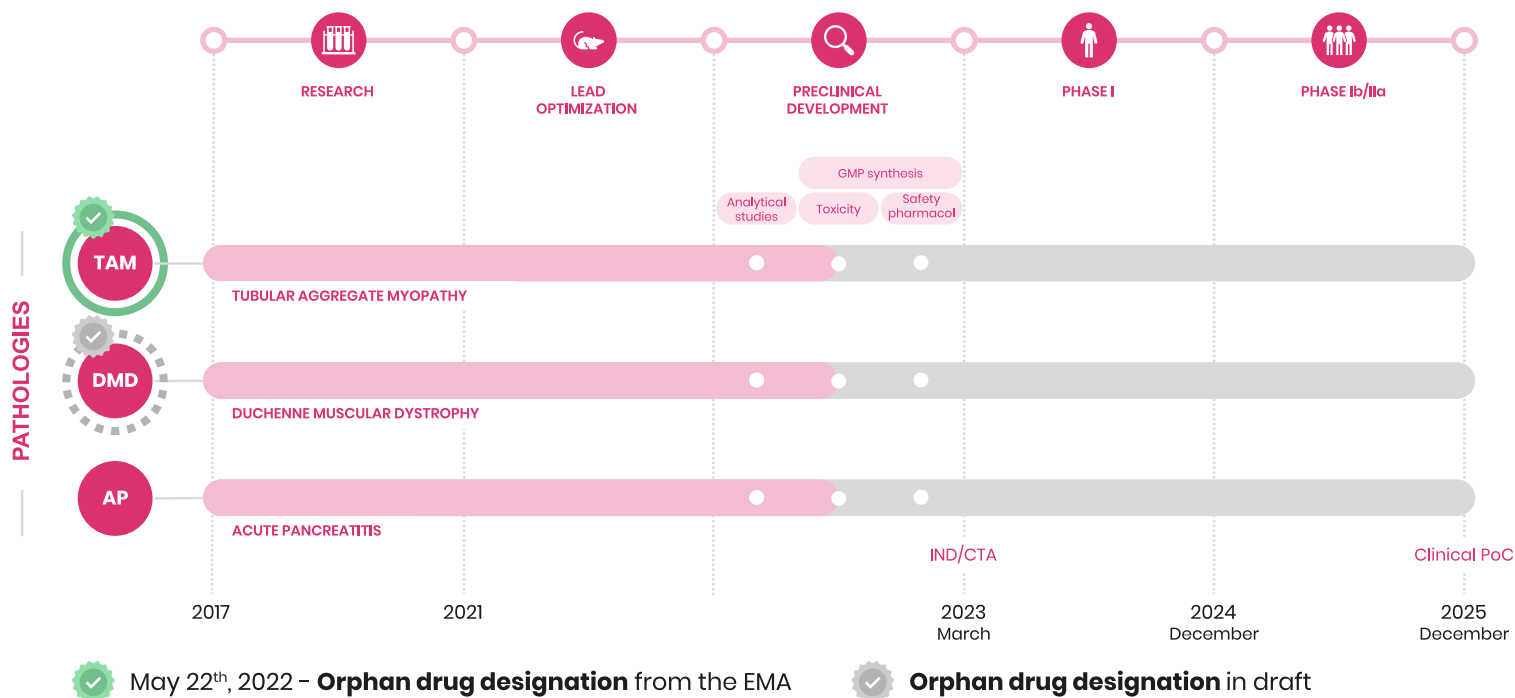


Our lead compound



SOCE activity reduction

DEVELOPMENT PIPELINE



PARTNERS & COLLABORATIONS

Bio4Dreams

UPO
UNIVERSITÀ DEL PIEMONTE ORIENTALE

BrainDTech

SAPIENZA
UNIVERSITÀ DI ROMA

ERBC

NeurZone

enne³
incubatore del Piemonte Orientale



FIND MORE
Scan the QR code
visit www.chemicare.it
or write to info@chemicare.it

Bio4Dreams
ecosystem